

**AN ORDINANCE TO AMEND THE STATE ROUTE 9 OVERLAY DISTRICT MAP**  
**(CHAPTER 64, ARTICLE VII, DIVISION 5)**

**BE IT ORDAINED** by the City Council of the City of Milton, GA while in a regularly called council meeting on April 27, 2015 at 6 p.m. as follows:

**SECTION 1.** This Ordinance now hereby amends the physical boundaries of the State Route 9 Overlay Map to reflect the deletion of certain parcels on State Route 9, north of Bethany Bend to the Forsyth County line, which now will be incorporated into the Deerfield Form Based Code Regulating Plan (Chapter 64, Article XX)

**SECTION 2.** This Ordinance and associated map is effective April 27, 2015 and;

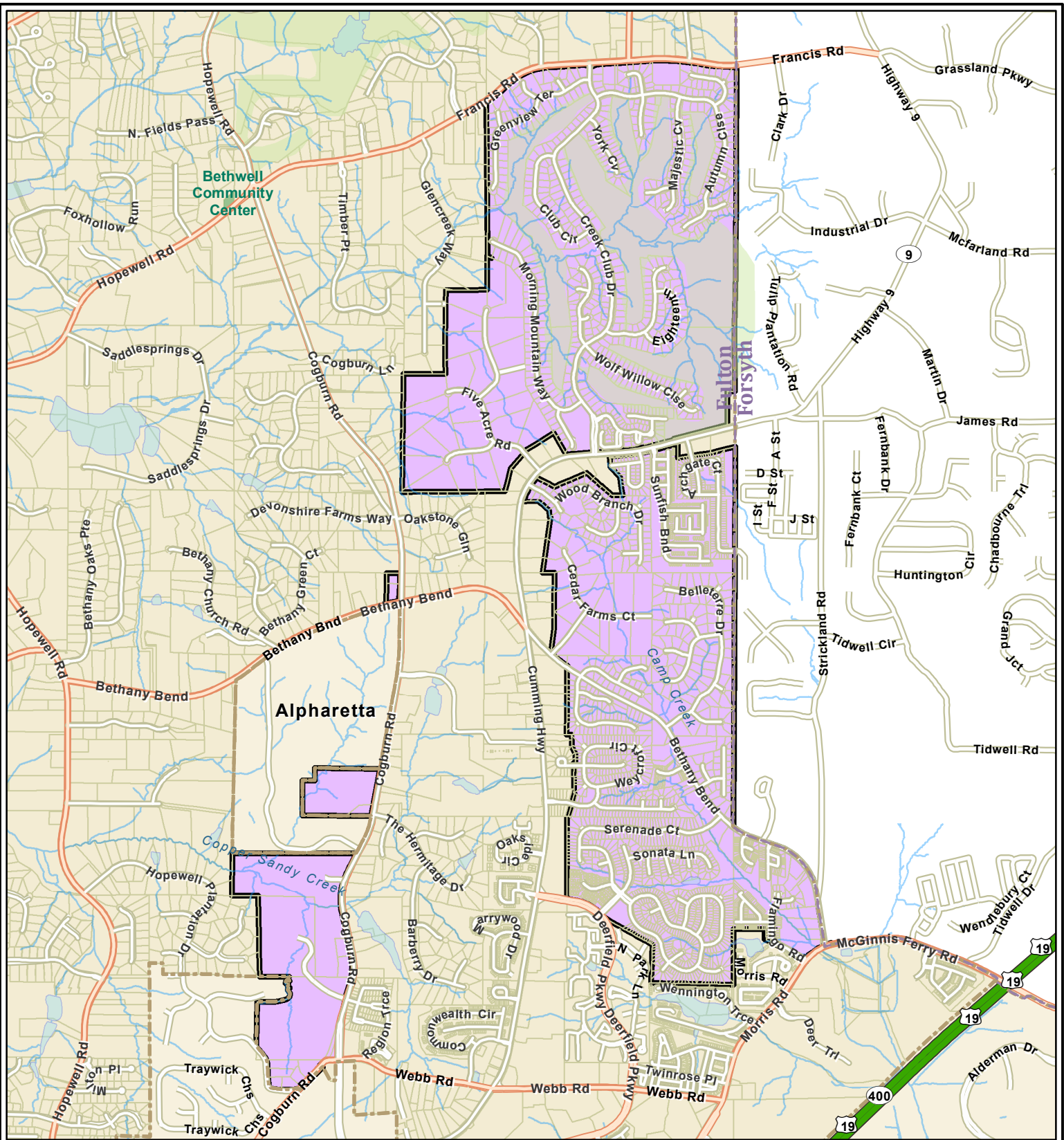
**SECTION 3.** That this Ordinance shall become effective upon its adoption.

**ORDAINED** this the 27<sup>th</sup> day of April, 2015.

\_\_\_\_\_  
Joe Lockwood, Mayor

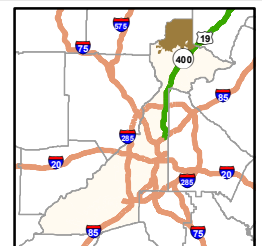
Attest:

\_\_\_\_\_  
Sudie AM Gordon, City Clerk



# RZ15-04 State Route 9 Overlay District Map City of Milton

- |                                |             |
|--------------------------------|-------------|
| State Route 9 Overlay District | Rivers      |
| Freeway/Highway                | Waterbodies |
| Ramp                           | City Limits |
| Major Arterial/Collector       | Counties    |
| Minor Arterial/Local           |             |



March 2015



**MILTON**  
ESTABLISHED 2006  
Created/Altered: 3/9/2015